



Facility Information

Page #	Description
Page 1	Facility Contact Information
Page 2	Site Map
Page 3 - 7	Facility Use Guidelines
Page 8	Check Out List

Camp Background

EYCC was built in the late 1960's and 70's by public interest groups looking to create a place for youth to learn outdoor skills. Today, it is owned and operated by the Florida Fish and Wildlife Conservation Commission's Florida Youth Conservation Centers Network (FYCCN). FYCCN has four conservation centers including EYCC that operate as year-round education facilities/training centers during the Fall – Spring and as Camps in the summertime. FYCCN also has community partners across the state of Florida that utilize FYCCN as a resource for training and equipment to offer recreation/wildlife-based programs. FYCCN's goal is to spread youth participation in four areas: paddle sports, shooting sports, fishing, and wildlife viewing.

Emergency: Call 911

Site Address:

12100 Seminole Pratt Whitney Rd
West Palm Beach, FL 33412

Rental Use Requests:

EYCC@MyFWC.com

561-624-6929

Facility Contact Information



Food Service and Camp Host
Devyn Hamann
Devyn.Hamann@MyFWC.com
Office: 561-273-4345
Cell: 561-568-2321



Recreation and Camp Host
Caylee Sarff
Caylee.Sarff@MyFWC.com
Office: 561-273-4344
Cell: 305-794-1696



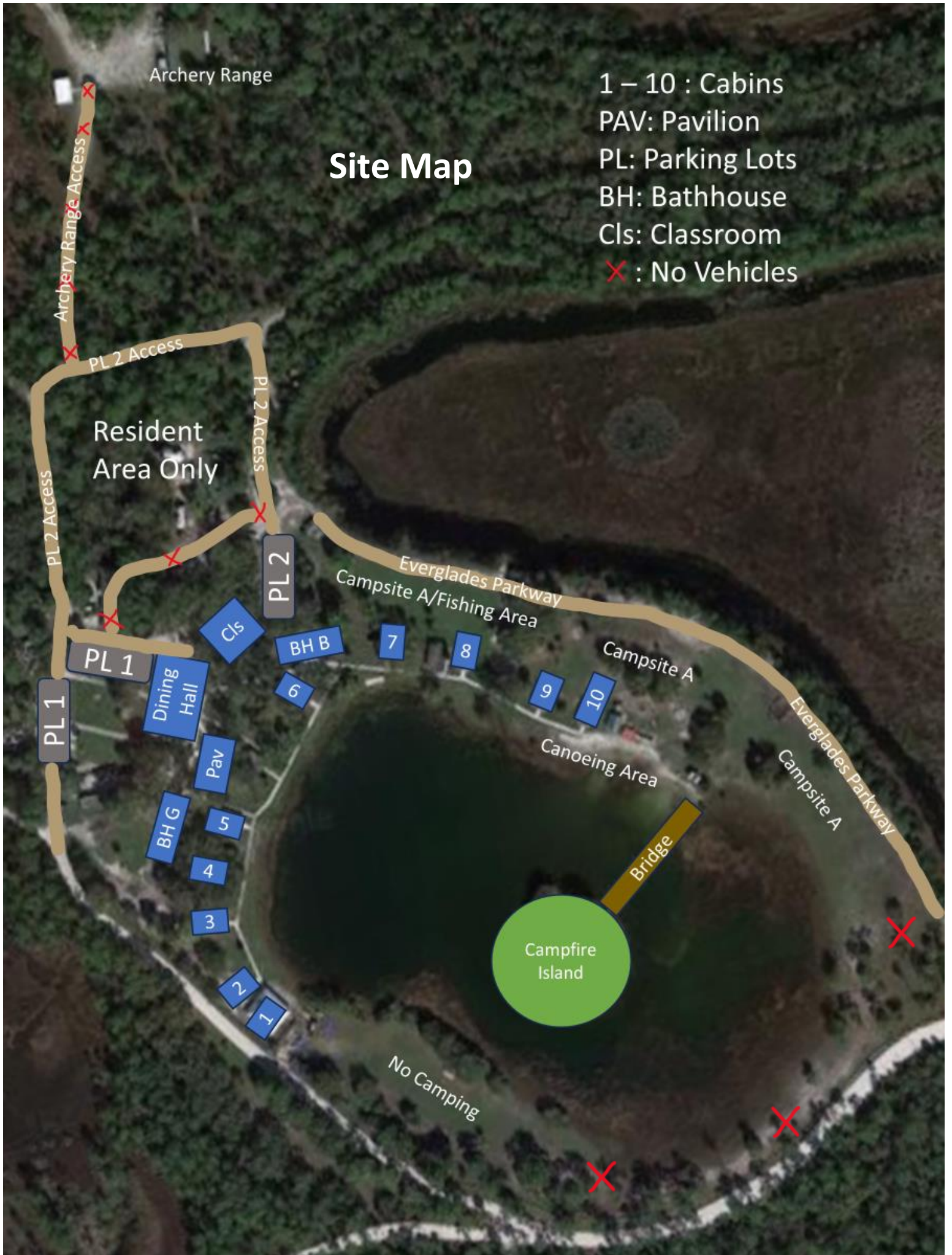
Booking Information and Payment
Dawn Herron
Dawn.Herron@MyFWC.com
Office: 561-624-6929



Maintenance
Dennis Yacino
Office: 561-273-4344
Cell: 508 -736 -2636

Site Map

- 1 – 10 : Cabins
- PAV: Pavilion
- PL: Parking Lots
- BH: Bathhouse
- Cl: Classroom
- ✗ : No Vehicles



Facility Use Guidelines

General Policies



Adult Supervision: Children and adolescents are required to be supervised by an adult in all indoor and outdoor areas at all times.



Quiet Hours: 10:00 pm – 6:30 am.



Respect Wildlife: View wildlife from a safe distance. Do not attempt to touch or feed wildlife. *(EYCC has resident chickens. Please do not chase, harass, feed, or touch them.)*



Keep EYCC Clean: Dispose of garbage in trash cans or recycle containers.



Required Footwear: Guests are required to wear closed toe, closed heel shoes at all times except at waterfront.



Off Limit Areas: Guests are not authorized to be in areas labeled “Staff Only”, “Resident Area”, “Private Residence”, or engage in shooting sports, paddle sports, swimming, or fishing without an EYCC area supervisor present.



No Pets Allowed



Personal Safety: No running on sidewalks or in the waterfront area. Use a flashlight at night. If there is an emergency call 911. Red signs are posted with the facility address in each building.



Respect EYCC Property: Please do not touch or move any displays or exhibits. Items such as tables, chairs, and trash cans should not be moved outside of their designated building or area. Supplies in closets, cabinets, and offices are for EYCC staff use only. Decorations must be completely removed by check out. No decorations should be hung up using pins, nails, tacks, or duct tape. Paint or markers should not be used to decorate any part of the facility.



Vehicle Use: Groups may not transport members in the back of trucks, trailers, or wagons and should ensure all members are transported in vehicles with a seatbelt.

- **Parking:** Cars may park in parking lots one or two. Parked cars should not block gates or loading zones.
- **Vehicle Access:** Cars are not permitted to drive on campgrounds except for on designated paths and roads.

Prohibited Items

Balloons, Silly String, or Confetti
Alcohol or Drugs
Glass Bottles
Gum
Stickers
ATVs, UTV's, or Golf Carts
RV's or Travel Trailers
Fireworks or Explosives

Facility Use Guidelines

Compliance

Responsibility for Group Compliance: The group representative is responsible for ensuring group compliance with the facility use guidelines.

Three Strike Rule: Groups with three or more violations may be excluded from future rental use.

When In Doubt, Ask! : If you have any questions before your stay, contact the main office. If questions arise during your stay, contact the camp host.

Bathhouses

- **Close The Doors:** The bathhouse doors require a firm push to close completely. Leaving doors open leads to bugs getting into the bathrooms and wastes electricity as the AC struggles to keep the room cool.
- **Flush Toilet Paper Only:** Do not flush wipes or feminine hygiene products. These items can cause backups in our septic system.
- **Conserve Water:** Make sure sinks and showers are turned off after use. Notify maintenance if a toilet seems to be running continuously.

Classroom, Dining Hall, and Pavilion

Arts and Crafts

- Arts and crafts may be done under the pavilion only. Groups are required to cover the tables with tablecloths or plastic liners and may only use washable paint and markers.

Dining Hall

- **Ice Machine Access:** Groups may access the ice machine on the back porch of the dining hall.
- **The kitchen is off limits**
- **Loading Zone Access:** The concrete pad behind the dining hall is for loading and unloading of items into the dining hall only and is limited to 15 minutes.

Classroom

- **Exhibits:** Please do not touch the exhibits or attempt to remove our education animals from their aquariums or terrariums.

Facility Use Guidelines

Cabins and Campsite A

Cabins

- **Bedding:** Pillows, sheets, and blankets are not provided.
- **Personal Safety:** Do not block aisleways or doorways.
- **Don't Break the Bunks!** : Please refrain from jumping, swinging, hanging, or rocking on the bunk beds.
- **No Food In The Cabins**

Campsite A

- **Tent Spacing:** Campsite A can accommodate up to 42 tents. Each tent space must be 20 ft wide by 25 ft long per health department requirements in Chapter 64E-15.009 Florida Administrative Code. Tents must be at least 25 ft from any buildings.
- **Transporting Equipment:**
 - Cars may be used to transport equipment to Campsite A but must remain on Everglades Parkway. Cars cannot remain on campgrounds and must park in parking lots 1 or 2 after dropping off equipment.
 - Trailers are allowed in parking lots 1 and 2 or they may be parked anywhere no more than 5 ft from Everglades Parkway.

Campfire Safety

- **Designated Campfire Areas:** Fires are permitted in the campfire rings located in Campsite A and Campfire Island. Groups may not light fires in any other areas.
- **No Equipment Provided:** Groups are responsible for providing their own firewood, charcoal, and cooking equipment.
- **Prevent Wildfires:** Fires must be completely extinguished before they are left unsupervised.
- **Prevent Burns or Explosions:** Gasoline, Diesel fuels, or lighter fluid should never be used to ignite campfires or be poured onto an active fire. All campfires and camp stoves must be supervised by an adult at all times.

Facility Use Guidelines

Recommendations For Youth Supervision Ratios

The Everglades Youth Conservation Camp is accredited through the American Camp Association and is required to advise groups on the ACA's standards for rental groups. Below are the ACA's supervision standards. We strongly recommend that groups consider implementing these standards to ensure the safety of all participants.

Age of Children	Number of Adults/Staff Supervising	Children Staying Overnight	Children Staying For The Day Only
5 years and younger	1	5	6
6 – 8 years	1	6	8
9 – 14 years	1	8	10
15 – 18 years	1	10	12

Age Recommendation for Supervision: All participants in charge of supervising children are at least 16 years old and at least 2 years older than the minors they are supervising. At least 80% (100% for groups primarily serving persons with special needs) of those in supervision roles are 18 years of age or older.

Prevent Abuse: Avoid one on one interaction between an adult and child without another adult present.

Groups Serving Youth With Disabilities: When the group serves participants with special physical, medical, cognitive, or behavioral needs, the following ratios of staff and counselor-support personnel are recommended:

Participant Description	Staff	Participants
Needing constant and individual assistance or supervision.	1	1
Needing close but not constant assistance or supervision.	1	2
Needing occasional assistance.	1	4
Needing minimal assistance.	1	5

Check Out Guidelines

Check Out List

Checkout is on Sunday at 10:00 am. Groups are required to complete the following tasks for all indoor and outdoor areas used during their stay including bathrooms.

- 1) **Pick Up Litter:** Litter is any garbage including food left on the ground or on any surface used by the group that has not been thrown away. Throw litter away in the appropriate garbage or recycle container.
- 1) **Remove Personal Belongings:** Double check each area for personal belongings and remove them especially in the cabins and bathhouses. *FWC will not be liable for the loss, theft, or damage of personal items.*
- 1) **Take Out Trash:** Empty the trash cans from any indoor or outdoor areas used during your stay. Trash may be disposed of in the dumpster behind the dining hall. A replacement liner should be located at the bottom of the trashcan. Contact the campground host if you are missing the replacement liner.
 - **Recycling:** Breakdown cardboard boxes and place them in the smaller dumpster. Do not place trash bags in the blue and yellow recycling bins instead dump contents directly into the bins and dispose of the trash bag in the dumpster. The blue bins are for plastic bottles and aluminum cans while the yellow bins are for paper.
 - **Reduce Waste:** The trash does not need to be taken out if it meets the following three criteria:
 - i) It is less than halfway full.
 - ii) It does not contain any food, human waste, or feminine hygiene products.
 - iii) It is not producing a strong odor.
- 1) **Wipe Down Tables and Chairs:** Use the provided wash buckets and rags to wipe down all tables and chairs/benches used during your stay. Please ensure they are free of any residue from food or arts and crafts.
- 1) **Sweep the Floors:** Use the provided brooms and dustpans to sweep the floors of all indoor areas used including bathrooms.
- 1) **Return All Areas To Their Original State:** Any equipment, tables, chairs, or benches that were moved or rearranged should be returned to their original locations or arrangement.
- 1) **Camp Host Inspection:** Once all of the above items are complete, contact the campground host for a final inspection. The campground host will provide you with feedback including any issues which arose during your group's stay. Notify the campground host of any damage which occurred during your stay and provide feedback on your overall experience.